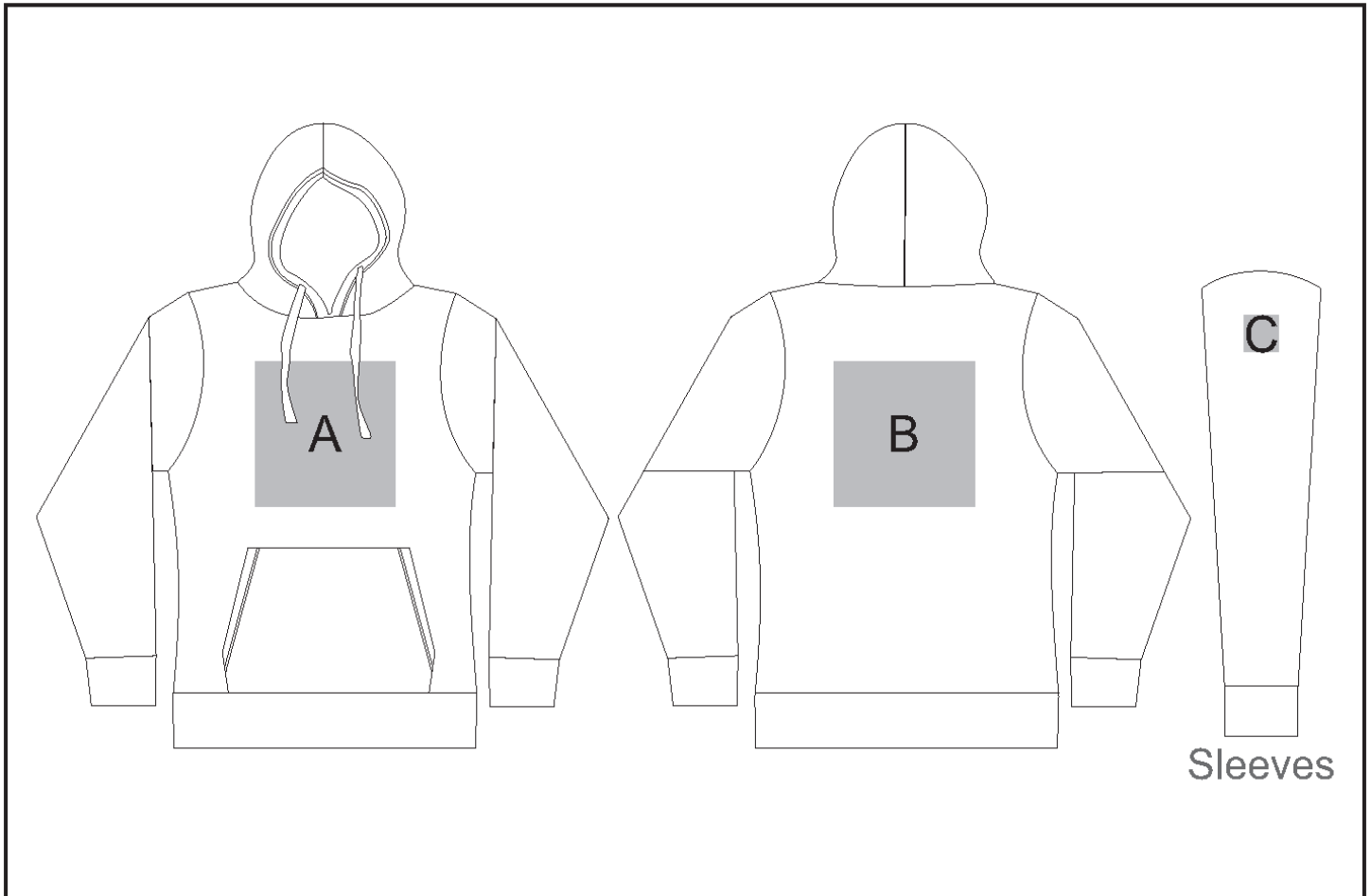


BAS-8042

Ladies Solo Hooded Sweater



Need to know:

Includes 1-Position Embroidery (setup fee applies)

- EMB inclusive parameters: Left/Right Chest or Back = 100mm x 100mm
- NB: Inclusive Branding is NOT applicable to Items marked as Reduced to Clear.
- Cannot guarantee a 100% straight branding on any clothing item with check or stripe detail.
- No solid blocks for screen print.

Branding Options:

Position	Branding Method (Branding Code)	No. of Colours	Dimension
A	Embroidery (EM-CLOTHING)	N/A	100mm wide x 100mm high
A	Screen Print (SA)	6 Colours	240mm wide x 130mm high
A	Digital Transfer Clothing A6 (DTC-A6)	Full Colour	148mm wide x 105mm high
A	Digital Transfer Clothing A5 (DTC-A5)	Full Colour	210mm wide x 148mm high
A	Digital Transfer Clothing A4 (DTC-A4)	Full Colour	250mm wide x 250mm high
A	Silicone (STP-A)	N/A	30mm wide x 30mm high
A	Silicone (STP-B)	N/A	50mm wide x 50mm high

A	Silicone (STP-C)	N/A	80mm wide x 80mm high
A	Silicone (STP-D)	N/A	120mm wide x 40mm high

B	Embroidery (EM-CLOTHING)	N/A	200mm wide x 200mm high
B	Screen Print (SA)	6 Colours	240mm wide x 297mm high
B	Digital Transfer Clothing A6 (DTC-A6)	Full Colour	148mm wide x 105mm high
B	Digital Transfer Clothing A5 (DTC-A5)	Full Colour	210mm wide x 148mm high
B	Digital Transfer Clothing A4 (DTC-A4)	Full Colour	250mm wide x 250mm high
B	Silicone (STP-A)	N/A	30mm wide x 30mm high
B	Silicone (STP-B)	N/A	50mm wide x 50mm high
B	Silicone (STP-C)	N/A	80mm wide x 80mm high
B	Silicone (STP-D)	N/A	120mm wide x 40mm high

C	Embroidery (EM-CLOTHING)	N/A	50mm wide x 50mm high
C	Digital Transfer Clothing A6 (DTC-A6)	Full Colour	50mm wide x 50mm high
C	Silicone (STP-A)	N/A	30mm wide x 30mm high
C	Silicone (STP-B)	N/A	50mm wide x 50mm high